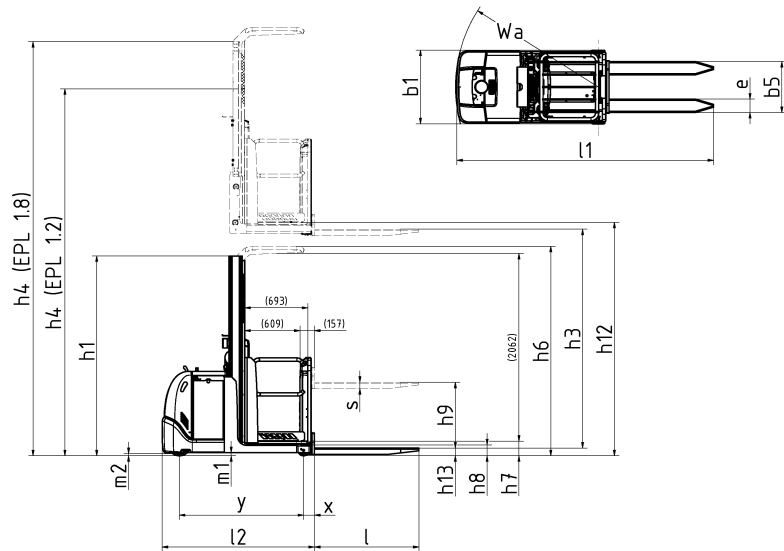


MEDIUM LEVEL ORDER PICKER

EPL 100 (1200 mm)

State-of-the-art ergonomics and excellent lift/drive performance to give high levels of productivity.



Mast type	Lift height H / h12	Height of mast lowered h1	Max mast height h4
Triplex			
Standard/Duplex	1200	1630	2670

Distinguishing mark	0	Specification		EPL 100 (1200 mm)		
	1.2	Manufacturer's type designation				
	1.3	Drive: electric (battery or mains), diesel, petrol, fuel gas		Electric		
	1.4	Operator type: hand, pedestrian, standing, seated, order-picker		Order picker		
	1.5	Load capacity/rated load	Q	t	1	
	1.6	Load centre distance	c	mm	400-600	
	1.8	Load distance, centre of load axle to fork	X		100 (Fixed fork)	
	1.9	Wheelbase	y	mm	1371	
	Weight	2.1	Service weight incl battery		kg	1450
2.2		Axle load, with load, front/rear		kg		
2.3		Axle load, without load, front / rear		kg	950/500	
2.4		Axle load, fork outreached with load, front / rear		kg		
2.5		Axle load, fork retracted with load, front / rear		kg		
Tyres, chassis	3.1	Tyres			Vulcollan	
	3.2	Tyre size, drive side		mm	250/105	
	3.3	Tyre size, load side		mm	120/115	
	3.4	Dimensions additional wheels (castor wheels)		mm		
	3.5	Wheels, number front/rear (drive side/load side, x = driven wheels)			1x/2	
	3.6	Track, drive side	b10	mm	0	
	3.7	Track, load side	b11	mm	674	
Dimensions	4.1	Tilt of mast/fork carriage, forward/backward		Grad		
	4.2	Height, mast lowered	h1	mm	1630	
	4.3	Free lift	h2	mm		
	4.4	Lift height H = h13+h3	H	mm	1130	
	4.5	Height, mast extended	h4	mm	2670	
	4.6	Straddle lift	h5	mm		
	4.7	Height of overhead guard (cabin)	h6	mm	(2300)	
	4.8	Seat height/stand height	h7	mm	160/1200	
	4.10	Height of wheel arms	h8	mm	115	
	4.11	Additional lift	h9	mm	-	
	4.14	Stand height, elevated	h12	mm	1200	
	4.15	Height lowered	h13	mm	90	
	4.19	Overall length	l1	mm	2805	
	4.20	Length to face of forks	l2	mm	1655	
	4.21	Overall width	b1	mm	810	
	4.21.1	Width over stabilizers		mm		
	4.22	Fork dimensions	s/e/l	mm	70/147/1150	
	4.23	Fork carriage to ISO 2328, clas / form A, B				
	4.24	Width of fork carriage	b3	mm	560	
	4.25	Width over forks, min/max	b5	mm	450-700	
	4.26	Distance between wheel arms	b4	mm		
	4.27	Width across guide rolls	b6	mm		
	4.28	Reach distance	l4	mm		
	4.29	Reach lateral	b7	mm		
	4.30	Reach lateral from vehicle centerline	b8	mm		
	4.31	Ground clearance, mast	m1	mm	35	
	4.32	Ground clearance, centre of wheelbase	m2	mm	35	
	4.33	Aisle width with pallet 1000 x 1200, crosswise	Ast	mm		
	4.34	Aisle width for pallet 800 x 1200, lengthwise	Ast	mm	3131	
	4.35	Turning radius	Wa	mm	1570	
	4.37	Length incl reach legs	l7	mm		
	4.38	Distance to swivelling-fork pivot	0	mm		
	Performance data	5.1	Travel speed, with/without load		km/h	9/9
		5.1.1	Travel speed with/without load, backwards		km/h	9/9
		5.2	Lift speed, with/without load		m/s	0,12/0,20
		5.3	Lowering speed, with/without load		m/s	0,25/0,23
		5.4	Reach speed, with / without load		m/s	
		5.7	Gradient, with/without load		%	
5.8		Max gradeability, with / without load, 5 min rating		%	10,2	
5.9		Acceleration time 0-10 m, with/without load		s	5,6/4,9	
5.10		Service brake: electric, hydraulic			El. - magnetic	
5.10.1		Parking brake: electric, hydraulic			Electric	
Electric engine	6.1	Drive motor, rating S2 60 min		kW	2,7	
	6.2	Lift motor		kW	2,2 (5%)	
	6.3	Battery according to DIN 43531/35/36	A,B,C		BS	
	6.4	Battery voltage / Battery capacity		V/Ah	24V/486Ah-600Ah	
	6.5	Battery weight		kg	Min 450	
	6.6	Power consumption according to VDI cycle		kWh/h		
Additional data	8.1	Speed regulation			AC Traction	
	10.1	Operating pressure attachments		bar		
	10.2	Oil flow for attachments		l/min		
	10.7	Noise level at operator's ear, according to EN 12 053		db(A)	57	

* Varies according to battery size

All rights reserved to change above specification